



HBMAG SCHOOL HOLIDAY PROGRAMME

During the Christmas school holidays we have a whole range of creative and entertaining activities on offer.

School Holiday Storytime

Join us in *The Miniatures* exhibition to hear the story read aloud and then explore the exhibition.
Monday 18 January & Monday 25 January 2009 at 11am
Entry by gold coin donation

**Holiday programme activities: All sessions 10am – 12noon
\$18 per child, includes all materials**

Bookings for holiday programmes can be made at HBMAG reception, and places are confirmed by payment. Please book early to ensure you don't miss out!

Tuesday 22 December 2009

Colonial Christmas (suitable for ages 5 – 8 yrs)
Have fun finding out how Christmas was celebrated in New Zealand 150 years ago. Dress up, play games and make your own Victorian Christmas card to take home.

Tuesday 19 January 2010

Precious Objects (suitable for ages 5 – 12 yrs)
Visit Areta Wilkinson's *Waka Huia* exhibition and start your own waka huia (treasure box) by creating something precious from everyday objects.

Thursday 21 January 2010

Print making (suitable for ages 8 – 12 yrs)
Explore the world of printmaking in the *Graphica Britannica* exhibition and make your own art print to take home.

Tuesday 26 January 2010

Peg Dolls (suitable for ages 5 – 8 yrs)
Visit *The Miniatures* exhibition and make your own traditional peg doll to take home.

Children's Films at the Century Cinema

Children's films will be screened through the holidays from Wednesday 20 January to Friday 29 January 2009.
Please visit our website www.centurycinema.co.nz for film details or join up to our weekly e-programme to ensure you don't miss out.

FARADAY CENTRE

Experience a journey down memory lane in an Aladdin's Cave of historical technology at The Faraday Centre - Hawke's Bay's Museum of Technology and Science. The Tesla coil will be running again over the school holidays at specified times. A Tesla coil is a type of resonant transformer circuit invented by Serbian-American scientist Nikola Tesla around 1891. It is generally used to generate very high voltage, low current, high frequency alternating current electricity. Please contact the Faraday Centre on 835 2338 for more information.

COLLECTION NEWS

The final two works from the 2007 Adopt a Painting fundraiser have returned from their conservation treatment at the Auckland Art Gallery. These are *Port Ahuriri* c1855 and *Fernhill District*, 1876. They are looking rejuvenated after their trip away and *Fernhill District* revealed an interesting secret.

The painting had acidic brown paper stuck to the reverse, which when removed revealed pages of newspaper. A local newspaper (*Daily Telegraph* is just discernable on one of the pages) from Wednesday, 6 May 1896 had been used as an intermediate layer between the painting and the brown paper. The conservator carefully removed the newspaper and then attached a backing to support the fragile pages. This backing allows them to still be read on both sides and they do provide for interesting reading. There are many advertisements from local businesses as well as local and international articles. For example, in one, "An Interrupted Elopement", a married woman and her lover were arrested for horse theft as the horse belonged to the woman's deceived husband and was then sold by her lover.



Summer Cemetery Walks

Back by popular demand - discover the fascinating stories of Napier Cemetery in this two hour guided tour. Funds from the walk will go towards the redevelopment of HBMAG.

Sunday 24 January 2010 at 2pm
Sunday 28 February 2010 at 2pm
There will be two more walks in March and April, 2010

Cost: \$10.00
Bookings can be made at HBMAG reception, and places are confirmed by payment. Please book early to ensure you don't miss out!

FROM THE DIRECTOR

As we head for summer, the fundraising for the museum redevelopment continues at a cracking pace. Approaches are being made to key funding bodies and private patrons with encouraging results. As we travel around we are hearing again and again that this is the right time for the project that so many of you want to see built.

This enthusiasm makes it a particularly exciting time for all of us involved in realising the dream of a new building. We are very aware that many of you wish to contribute towards or support the project in one way or another. We will be launching a community fundraising drive in the early New Year, so watch this space for updates or check in with our fundraising website www.joinus.org.nz. We will soon be unveiling a number of exciting ways for people to contribute towards a better bolder brighter Hawke's Bay Museum & Art Gallery.

In the meantime visitors to the Hawke's Bay Museum & Art Gallery will notice that the model of the new wing of the HBMAG, designed by Richard Daniels, is in pride of place. Built for us by top Australasian architectural model maker Joel Taylor (now based in Ahuriri), this dynamic new model provides an exciting view of what the new wing will look like.

The model illustrates the new double height entry spaces that will provide HBMAG with one focussed entry, as well as orientating the building to both the Memorial Arches on Marine Parade and to the veranda of the Masonic Hotel.

The understated elegance of Richard Daniel's design carries through from the exterior to the generous foyer, and into the galleries themselves. The floor of the new foyer, designed by artist Sara Hughes, marks the building as an exciting contemporary space in keeping with the spirit of Napier. Peeking into the model from the Marine Parade side reveals one of the large upper floor galleries, the new education suites and below, new spaces for our Design Team. On the opposite side of the model, a new wall of video screens can be seen. These will eventually show films and video works to audiences that will no doubt collect on Herschell Street.

This model will have a very active life as a fundraising tool and will travel around with Mayor Barbara Arnott and I as we visit potential funders of the museum redevelopment. The model allows us to clearly illustrate just how good this project really is for everyone in Hawke's Bay. So if you come to see the model, as I hope you all will, and find that it is missing, you will know that it's off with us in the community doing good work.

BERRY HISTORICAL LIBRARY

Change of opening hours from Easter 2010

In order to prepare our collections for the redevelopment we will be reducing the Library's opening hours to one day a week. From Friday 9 April 2010, new opening hours will be on a Friday 10am – 12pm and 1pm – 4.30pm. All visits need to be booked in advance.

FRIENDS

I would like to thank all the *friends* for their support this year at both the *friends* evenings and our fund-raising events. I'm sure you'll agree the *friends* programme this year has been very successful - full of variety and interest.

Special thanks to all our presenters who made the evenings such a success.

We are well into organizing next year's programme. Our *friends* evenings continue on the second Thursday of every month (except January and February) starting on March 11th with *Ply-ability*. Mark this date in your diary now!

The *friends* are looking ahead to the planned museum redevelopment from July and the opportunities this offers. The Committee is designing a series of "*friends* Out on the Town" evening talks and privileged access events. From July you'll be able to join us out and about in different locations around the Bay. Of course this is months away. We'll continue our regular evenings "In the Galleries" from March to June 2010.

Christmas is coming! Our last *friends* evening this year is on Tuesday December 8th at 5.30pm (please note the change of day). Join us for a drink, nibbles and shopping in the Museum Foyer for a special friends-only occasion. Please see the invitation enclosed with this newsletter for details.



Recently the *friends* have purchased the painting *Still Life, Gabriel's Trumpet*, 1930, by R.N. Field for the HBCT collection. Field, a contemporary of Roland Hipkins, was one of the La Trobe scheme artists brought to New Zealand in the 1920s to improve the quality of New Zealand art. This painting is an excellent example of Fields work with brushwork and colour indicative of the distinctive Post-Impressionist style, which made such an impact on the New Zealand art scene.

I wish you a safe and happy festive season and look forward to catching up with you in the New Year.

Marc Nel

President, *friends* of the Hawke's Bay Cultural Trust/Ruawhoro Ta-u-Rangi,

R.N. Field *Still Life, Gabriel's Trumpet*, 1930
Hawke's Bay Cultural Trust/Ruawhoro Ta-u-Rangi

BERRY HISTORICAL LIBRARY @ HBMAG

The Berry Historical Library is a research facility at the HBMAG which houses an extensive collection of photographs, books and other archival material pertaining to Hawke's Bay. Open Monday to Friday, 1pm - 4.30pm.

EDUCATION PROGRAMME @ HBMAG

The HBMAG schools education programme provides a fun, hands-on educational experience that draws on the exhibitions and collections held at the Hawke's Bay Museum & Art Gallery and the Faraday Centre.

Highlights for Term 1

At the Faraday Centre we are running two new education workshops *Sun-Sensational!* (Years 1 - 4) and *Luminous Optimus* (Years 4 - 10). Highlights include the solar furnace, glow worm cave, reflections challenge and funky distorting mirror.

At HBMAG in our *Of Miniatures and Magic* workshops students can use their imagination and creativity to devise original stories based on their favourite miniatures and make their own miniature rooms complete with furniture and decor.

CENTURY CINEMA AND THEATRE @ HBMAG

The Century Cinema screens an excellent range of films generally from Wednesday to Sunday, including monthly classic film nights. With Children's Film screenings each school holidays.

Find out what's on by signing up to the weekly E-Programme, our website www.centurycinema.co.nz, checking the Napier Mail and Hawke's Bay Today on Fridays, picking up a weekly flier from HBMAG reception or calling the infoline on 835 7781 ext 1.

The Century Theatre is also available for hire and hosts a wide range of events. Contact Eardley Bennett on ebennett@hbmag.co.nz

SHOP @ HBMAG

The Museum Shop has a **fantastic range of New Zealand art and design related merchandise, including books, cards, calendars, textiles and homewares, and jewellery**. For that special gift or memento, the Museum Shop is the ideal place to visit.

OPENING HOURS

7 days: 10am - 6pm, (late night Thursday until 8pm) closed Christmas Day
FREE ENTRY for locals every Thursday night 5-8pm and the first Sunday of every month.

The Hawke's Bay Museum & Art Gallery is kindly supported by:



HBMAG NEWSLETTER SPONSORED BY: FRIENDS OF HAWKE'S BAY CULTURAL TRUST
HAWKE'S BAY MUSEUM & ART GALLERY NAPIER
9 Herschell Street Napier phone 06 835 7781 www.hbmag.co.nz

December January February 2009/10

HBMAG

HAWKE'S BAY MUSEUM & ART GALLERY NAPIER





PLY-ABILITY

12 December 2009 – 27 June 2010

Ply-ability is the first exhibition in New Zealand devoted to the fascinating story of innovation and change in New Zealand plywood studio furniture.

The exhibition celebrates the innovation of one of New Zealand's most important furniture designers - Garth Chester - and the significant body of plywood furniture that he developed in the late 1940s and early 1950s.

Using plywood, the material which captivated Chester, the exhibition looks at other New Zealand designers who have worked with plywood. It presents rare examples of local modernist furniture, experimental works by amateur designers and designs by some of New Zealand's leading contemporary furniture designers. Using the common element of plywood, *Ply-ability* moves through key moments in the history of local design from Art Deco through to the present day.

Ply-ability will be accompanied by a publication including new writing by curator Lucy Hammonds and guest writer Rigel Sorzano. A symposium exploring different models of New Zealand design practice is also planned for early next year. Please contact HBMAG to register your interest for this event.

Exhibition Opening

Friday 11 December 2009 at 5.30pm

Free entry. Limited numbers, please RSVP to reception by Wednesday 9 December.

Curator's Floortalk

Saturday 12 December 2009 at 11am

Join Lucy Hammonds and some of the contemporary designers with works included in *Ply-ability* for a tour through the exhibition. Free entry.

A BREATH OF FRESH AIR

Art Deco's fashionable legacy

13 February – 27 June 2010

Art Deco fashion swept away the cobwebs of the First World War with style. The austerity of wartime fashion was replaced with decorative, luxurious and modern styles that captured the spirit of the times. The glamour of the silver screen, the pattern and ornament of architecture and design, and the challenge of women's liberation all combined to reshape fashion and how it fitted in with the modern world. Since then, the style and spirit of Art Deco have continued to resurface in fashion worldwide.

Using garments and objects from the collection of the Hawke's Bay Cultural Trust/Ruawhoro Ta-u-Rangi, *A Breath of Fresh Air* takes a journey through 60 years of Art Deco in fashion.

Exhibition Opening

Friday 12 February 2009 at 5.30pm

Free entry. Limited numbers, please RSVP to reception by Wednesday 9 February.

Curator's Floortalk

Thursday 4 March 2009 at 6pm

Join Lucy Hammonds on a gallery tour. Free entry.



The Long and the Short of the Evening Mode. Fashion Plate, 1929
Hawke's Bay Cultural Trust/Ruawhoro Ta-u-Rangi, M2001/49/25



THE MINIATURES

An adventure in the Bren collection, by Stephanie Johnson

26 September 2009 – 11 April 2010

The Miniatures opened in September with a fun-filled family event and has continued to delight visitors young and old.

The exhibition weaves together the magic of a unique collection of miniatures and the story telling talents of one of New Zealand's favourite authors, Stephanie Johnson.

"The Miniatures is gorgeous – 'a triumph'"

Visitor from Whangarei

"We wait in hope for the miniatures to spring to life"

Visitor from Waipukurau

The Miniatures exhibition. Photographer, David Frost
Hawke's Bay Cultural Trust/Ruawhoro Ta-u-Rangi

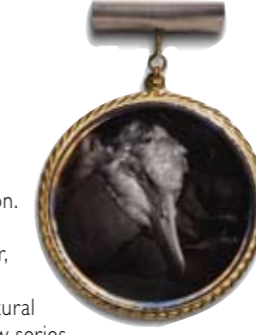
WAKA HUIA

Areta Wilkinson

17 October 2009 – 14 March 2010

Waka Huia is a treasure trove of precious jewellery, objects, and stories created by leading New Zealand jeweller Areta Wilkinson.

While this exhibition is part of a national tour, as a special addition to the project Wilkinson visited the collection of the Hawke's Bay Cultural Trust/Ruawhoro Ta-u-Rangi to research a new series of works. Among the collections she discovered a small toggle made from albatross bone. In the work *Roimata Toroa (Tears of the Albatross)* Wilkinson draws on the traditions of portrait jewellery and *memento mori* to commemorate the albatross, reflecting on how its presence extends well beyond its life.



RESCUE ME

The Adopt a Painting Project

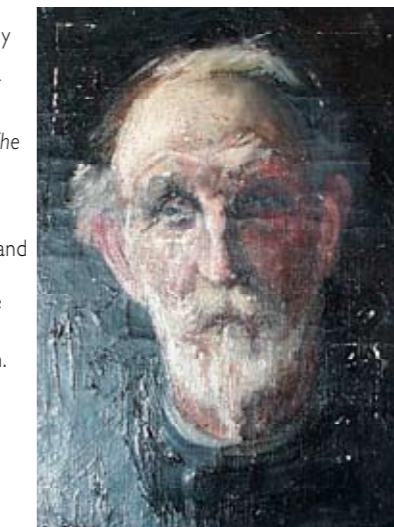
21 August 2009 – 31 January 2010

Hawke's Bay Museum and Art Gallery houses a unique fine art collection and while careful storage, handling and environmental controls are in place to ensure that our collection will endure, some of our treasures have not survived the passing years unscathed.

Rescue Me explains what is involved in the conservation of each artwork and invites you to make a practical contribution towards the care of an artwork of your choice by adopting a painting - a unique role that will be recognised by generations to come.

Thank you to all of the adopters who have already pledged their support. We still have a number of wonderful paintings that need adoption including *The Good Ship Surge Bound* by Hawke's Bay artist Albert Finnis, which depicts his immigration to New Zealand in 1856 and *The Preacher* by Mina Arndt, one of the few New Zealand women painters of her generation.

If you would like to help please contact Pam Joyce, HBMAG, Marketing Team Leader.



Areta Wilkinson – *Roimata Toroa (Tears of the Albatross)* 2009
Photographer, Mark Adams

Mina Arndt, 1885-1926, *The Preacher*, undated
Oil on canvas
Hawke's Bay Cultural Trust/Ruawhoro Ta-u-Rangi, 61/204

GRAPHICA BRITANNICA

14 November 2009 – 28 February 2010

Graphica Britannica is an exhibition of historically significant British prints from the first half of the 20th Century. The works included capture the spirit of modernist printmaking, including beautiful examples typical of the Art Deco period.

Drawn from the Rex Nan Kivell Collection, this exhibition includes works by major British artists including Vanessa Bell, Duncan Grant, Eric Gill, John Nash, John Piper and Graham Sutherland.

A Christchurch Art Gallery Te Puna o Waiwhetu touring exhibition.



TE PUNA O WAIWHETU
CHRISTCHURCH
ART GALLERY

Ethel Spowers, *Wet Afternoon*, 1930
Linocut
Collection of the Christchurch Art Gallery. Presented by Mr Rex Nan Kivell, 1953

cover: Garth Chester, *Curves Chair*, 1944, Photograph courtesy Art + Object
Plywood
Private Collection, Auckland

Chris Grattan, *Curve Chair*, 1996, Photographer, David Frost
Plywood, cast aluminium
Private collection, Auckland